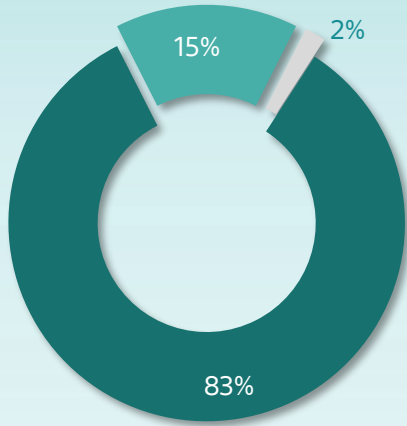
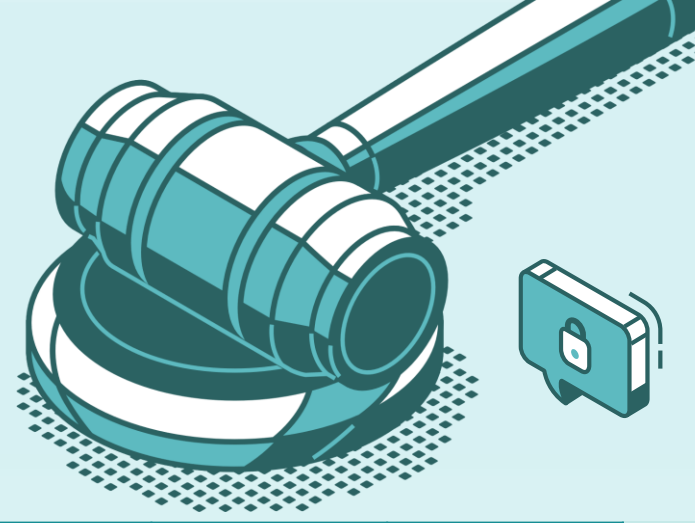


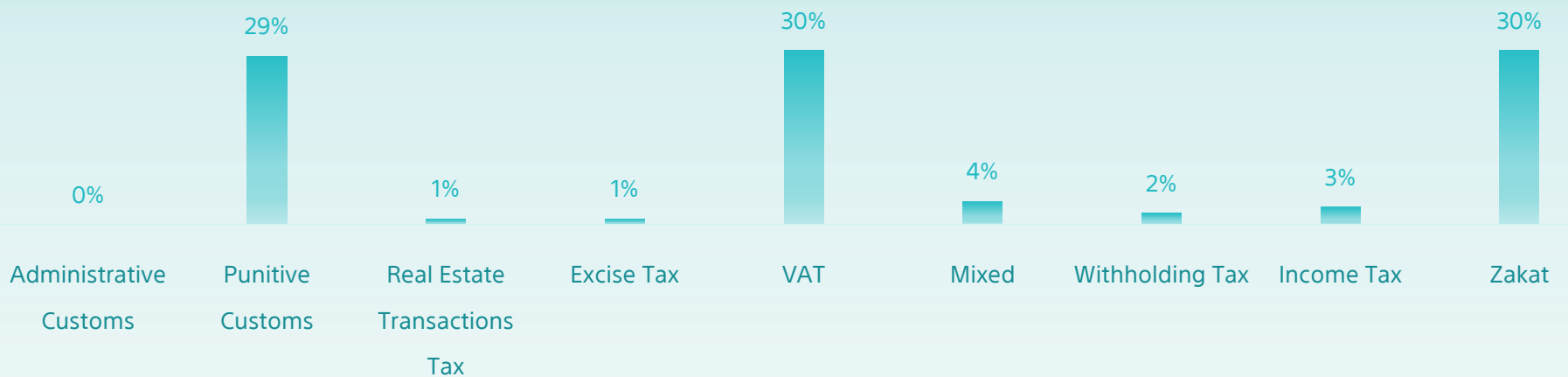
All Cases Report

Until May 2023



Initial Appeal Reconsider

Classification	Initial	Appeal	Reconsider	Total
Zakat	38,192	9,469	1,463	49,124
Income Tax	3,335	953	84	4,372
Withholding Tax	1,917	753	78	2,748
Mixed	4,529	1,321	113	5,963
VAT	40,376	7,029	733	48,138
Excise Tax	701	219	14	934
Real Estate Transactions Tax	1,208	156	17	1,381
Punitive Custom	41,635	3,588	209	45,432
Administrative Customs	365	160	28	553
Total	132,258	23,648	2,739	158,645



Top cases classification / type



Fine (VAT)
11%



Tax Assessment-
Discretion (Zakat)
15%



Tax Assessment -
Accounts (Zakat)
16%



Tax Return & Fine (VAT)
9%



Disposing of a restricted cleared merchandise
with a pledge not to dispose of.
(Customs)
18%

